

This document provides you with key investor information about this fund. It is not marketing material. The information is required by law to help you understand the nature and the risks of investing in this fund. You are advised to read it so you can make an informed decision about whether to invest.

## TRIGON - New Europe Fund A EUR

ISIN: LU1687402393

A Subfund of the Fund TRIGON

The Fund is managed by IPConcept (Luxemburg) S.A..

### Objectives and investment policy

The objective of the investment policy for TRIGON - New Europe Fund is to achieve reasonable growth in the sub-fund currency while taking account of the investment risk.

In order to achieve the investment objective of the sub-fund TRIGON - New Europe Fund a minimum of 90 % of the net sub-fund assets will be invested in shares traded on the regulated markets of the countries that joined the European Union in 2004 and later and of the countries that are expected to join the European Union.

A maximum of 10 % of the net sub-fund assets may be invested in liquid funds.

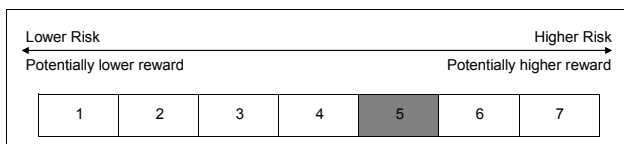
The Fund may not invest more than 10 % of its net asset value in money market instruments, certificates, structured products and bonds.

Detailed information on the aforementioned (and/or further) investment opportunities of the Fund can be found in the current sales prospectus.

In principle, investors may redeem their shares on any banking day in Luxembourg, with the exception of 24 and 31 December. The redemption of shares may be suspended in extraordinary circumstances if this is deemed necessary in the interests of investors.

The Fund reinvests but does not pay rewards to investors.

### Risk and reward profile



The historical data used for calculating the synthetic indicator are not a reliable indication of the future risk and reward profile of the share class. The category shown is not guaranteed to remain unchanged and may shift over time. Even the lowest category does not mean a risk-free investment.

This share class has been placed in the aforementioned risk class because its unit price is subject to medium to significant fluctuation, therefore the profit potential and loss exposure may be moderate to high.

Because of the calculation model used, all risks may not be taken into consideration when placing the share class in a risk class. Detailed information can be found in the section entitled "Risks" of the prospectus. The following risks have no direct influence on this categorisation, but may be significant for the Fund:

#### Credit risks:

The Fund may invest part of its assets in bonds. The issuers of these bonds could become insolvent, causing the bonds to lose some or all of their value.

#### Liquidity risks:

The Fund may invest part of its assets in securities that are not traded on a stock exchange or similar market. It may be difficult to find a buyer for such securities in the short term. As a result, the risk that share redemptions will be suspended may increase.

#### Counterparty risks:

The Fund may enter into various transactions with counterparties. If a counterparty becomes insolvent, that party will not be able to meet some or all of its open obligations to the Fund.

#### Risks relating to the use of

The Fund may enter into derivative transactions for the purposes listed above in the section "Investment policy". This means increased opportunities, but also increased risk of losses. The use of derivatives to hedge against losses may also reduce the profit opportunities of the Fund.

#### Operating risks and custodial risks:

The Fund may fall victim to fraud or other criminal activities. It may suffer losses through misunderstandings or errors on the part of employees of the investment company or third parties or be hurt by external events, such as natural disasters. There is a risk of loss associated with holding assets in custody, especially abroad. This risk may result from insolvency, negligence or misconduct on the part of the Custodian or a sub-custodian.

## Charges

### One-off charges taken before or after you invest

<b>Entry charge</b>	<b>0,00%</b>
<b>Exit charge</b>	<b>0,00%</b>

This is the maximum that might be taken out of your money before it is invested or before payment of the redemption price. Please consult your financial advisor for the actual amounts.

### Charges taken from the Fund in the past financial year

<b>Ongoing charges</b>	<b>1,11%</b>
------------------------	--------------

Due to an amendment of the fees, the costs indicated here are estimates. The annual report of the Fund for each financial year contains details of the actual calculated costs.

### Charges taken from the Fund under certain specific conditions

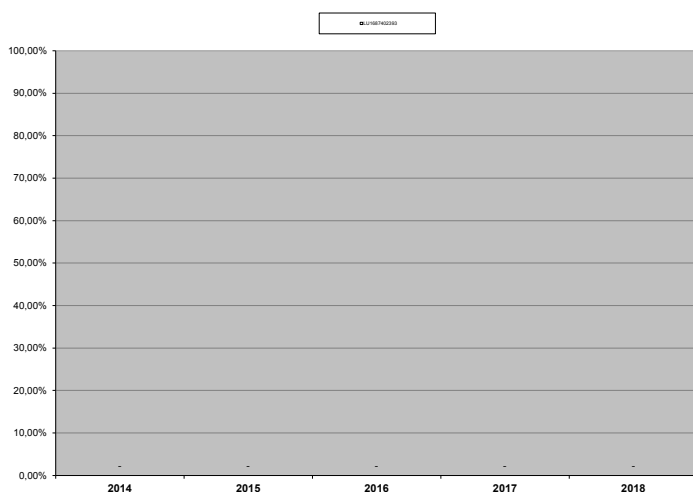
#### **Performance fees:**

No performance fee is foreseen for this shareclass.

The charges borne by the investor are used for the operation of the Fund and for its management, marketing and distribution. The charges reduce the potential investment growth of the Fund.

Any eventual performance-related fee as well as any transaction costs incurred, with the exception of the transaction costs of the Custodian Bank, are not included in the 'ongoing charges' figure.

## Past performance



The share class was established in 2018.

Because this share class has been newly launched, no useful information about previous performance can be made available here.

## Practical information

The Fund's Depository is DZ PRIVATBANK S.A., whose registered office is at 4, rue Thomas Edison, Strassen, Luxembourg.

Additional information on the Subfund, the current prospectus with annex and management regulation, and the most recent annual and semi-annual reports (all in English) may be obtained at no charge during normal business hours from the Investment Company, Management Company, the Depository, the Distributor(s) and the Paying Agent(s).

Further practical information as well as the up-to-date unit prices may be downloaded from the Management Company's website at any time and requested free of charge from the aforementioned agents. Moreover, details of the up-to-date remuneration policy, containing a description of how remuneration and other benefits are calculated, as well as the identities of persons responsible for allocating the remuneration and other benefits, including the composition of the remuneration committee (should one exist), may be downloaded from the Management Company a hard copy may also be requested free of charge from the aforementioned agents. The Management Company's website is [www.ipconcept.com](http://www.ipconcept.com).

The tax laws in the Member State in which the Subfund originated may influence your personal tax situation. Please consult your tax advisor with regard to the tax consequences of investing in the Subfund.

The Management Company may be held liable solely on the basis of any statement contained in this document that is misleading, inaccurate or inconsistent with the relevant parts of the prospectus.

This key information describes a share class of the Subfund. The Subfund forms part of an umbrella fund. The prospectus and the reports may contain information on all share classes of the entire Fund mentioned at the beginning of this document. The assets and liabilities of all Subfunds are segregated by law.

In principle, units of the sub-funds and/or of the unit class may be exchanged for those of another sub-fund and/or unit class. Please refer to the Sales Prospectus for details on any exchange options and associated costs.

This Fund is authorised in Luxembourg and regulated by the Commission de Surveillance du Secteur Financier.

This key investor information is accurate as at 06.02.2019.

## KEY INVESTOR INFORMATION



This document provides you with key investor information about this fund. It is not marketing material. The information is required by law to help you understand the nature and the risks of investing in this fund. You are advised to read it so you can make an informed decision about whether to invest.

### TRIGON - New Europe Fund A USD

ISIN: LU1687402476

A Subfund of the Fund TRIGON

The Fund is managed by IPConcept (Luxemburg) S.A..

#### Objectives and investment policy

The objective of the investment policy for TRIGON - New Europe Fund is to achieve reasonable growth in the sub-fund currency while taking account of the investment risk.

In order to achieve the investment objective of the sub-fund TRIGON - New Europe Fund a minimum of 90 % of the net sub-fund assets will be invested in shares traded on the regulated markets of the countries that joined the European Union in 2004 and later and of the countries that are expected to join the European Union.

A maximum of 10 % of the net sub-fund assets may be invested in liquid funds.

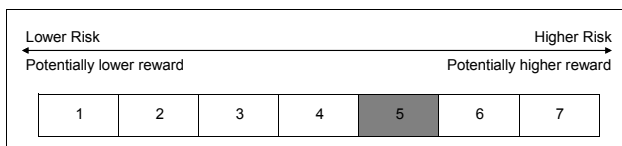
The Fund may not invest more than 10 % of its net asset value in money market instruments, certificates, structured products and bonds.

Detailed information on the aforementioned (and/or further) investment opportunities of the Fund can be found in the current sales prospectus.

In principle, investors may redeem their shares on any banking day in Luxembourg, with the exception of 24 and 31 December. The redemption of shares may be suspended in extraordinary circumstances if this is deemed necessary in the interests of investors.

The Fund reinvests but does not pay rewards to investors.

#### Risk and reward profile



The historical data used for calculating the synthetic indicator are not a reliable indication of the future risk and reward profile of the share class. The category shown is not guaranteed to remain unchanged and may shift over time. Even the lowest category does not mean a risk-free investment.

This share class has been placed in the aforementioned risk class because its unit price is subject to medium to significant fluctuation, therefore the profit potential and loss exposure may be moderate to high.

Because of the calculation model used, all risks may not be taken into consideration when placing the share class in a risk class. Detailed information can be found in the section entitled "Risks" of the prospectus. The following risks have no direct influence on this categorisation, but may be significant for the Fund:

#### Credit risks:

The Fund may invest part of its assets in bonds. The issuers of these bonds could become insolvent, causing the bonds to lose some or all of their value.

#### Liquidity risks:

The Fund may invest part of its assets in securities that are not traded on a stock exchange or similar market. It may be difficult to find a buyer for such securities in the short term. As a result, the risk that share redemptions will be suspended may increase.

#### Counterparty risks:

The Fund may enter into various transactions with counterparties. If a counterparty becomes insolvent, that party will not be able to meet some or all of its open obligations to the Fund.

#### Risks relating to the use of

The Fund may enter into derivative transactions for the purposes listed above in the section "Investment policy". This means increased opportunities, but also increased risk of losses. The use of derivatives to hedge against losses may also reduce the profit opportunities of the Fund.

#### Operating risks and custodial risks:

The Fund may fall victim to fraud or other criminal activities. It may suffer losses through misunderstandings or errors on the part of employees of the investment company or third parties or be hurt by external events, such as natural disasters. There is a risk of loss associated with holding assets in custody, especially abroad. This risk may result from insolvency, negligence or misconduct on the part of the Custodian or a sub-custodian.

## Charges

### One-off charges taken before or after you invest

<b>Entry charge</b>	<b>0,00%</b>
<b>Exit charge</b>	<b>0,00%</b>

This is the maximum that might be taken out of your money before it is invested or before payment of the redemption price. Please consult your financial advisor for the actual amounts.

### Charges taken from the Fund in the past financial year

<b>Ongoing charges</b>	<b>1,11%</b>
------------------------	--------------

Due to an amendment of the fees, the costs indicated here are estimates. The annual report of the Fund for each financial year contains details of the actual calculated costs.

### Charges taken from the Fund under certain specific conditions

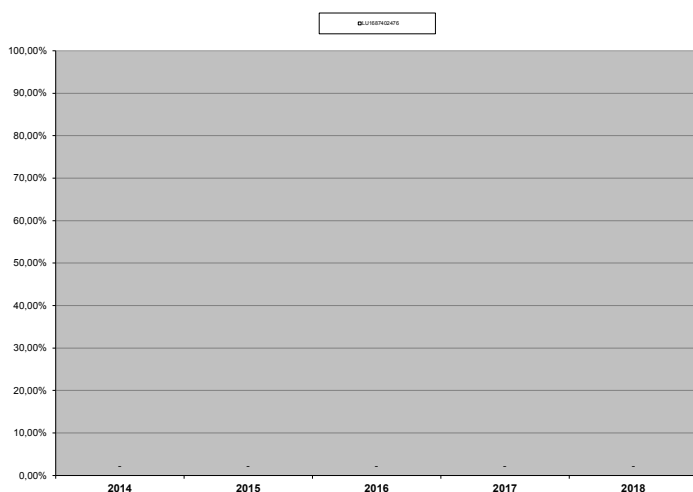
#### **Performance fees:**

No performance fee is foreseen for this shareclass.

The charges borne by the investor are used for the operation of the Fund and for its management, marketing and distribution. The charges reduce the potential investment growth of the Fund.

Any eventual performance-related fee as well as any transaction costs incurred, with the exception of the transaction costs of the Custodian Bank, are not included in the 'ongoing charges' figure.

## Past performance



The share class was established in 2018.

Because this share class has been newly launched, no useful information about previous performance can be made available here.

## Practical information

The Fund's Depository is DZ PRIVATBANK S.A., whose registered office is at 4, rue Thomas Edison, Strassen, Luxembourg.

Additional information on the Subfund, the current prospectus with annex and management regulation, and the most recent annual and semi-annual reports (all in English) may be obtained at no charge during normal business hours from the Investment Company, Management Company, the Depository, the Distributor(s) and the Paying Agent(s).

Further practical information as well as the up-to-date unit prices may be downloaded from the Management Company's website at any time and requested free of charge from the aforementioned agents. Moreover, details of the up-to-date remuneration policy, containing a description of how remuneration and other benefits are calculated, as well as the identities of persons responsible for allocating the remuneration and other benefits, including the composition of the remuneration committee (should one exist), may be downloaded from the Management Company a hard copy may also be requested free of charge from the aforementioned agents. The Management Company's website is [www.ipconcept.com](http://www.ipconcept.com).

The tax laws in the Member State in which the Subfund originated may influence your personal tax situation. Please consult your tax advisor with regard to the tax consequences of investing in the Subfund.

The Management Company may be held liable solely on the basis of any statement contained in this document that is misleading, inaccurate or inconsistent with the relevant parts of the prospectus.

This key information describes a share class of the Subfund. The Subfund forms part of an umbrella fund. The prospectus and the reports may contain information on all share classes of the entire Fund mentioned at the beginning of this document. The assets and liabilities of all Subfunds are segregated by law.

In principle, units of the sub-funds and/or of the unit class may be exchanged for those of another sub-fund and/or unit class. Please refer to the Sales Prospectus for details on any exchange options and associated costs.

This Fund is authorised in Luxembourg and regulated by the Commission de Surveillance du Secteur Financier.

This key investor information is accurate as at 06.02.2019.

## KEY INVESTOR INFORMATION



This document provides you with key investor information about this fund. It is not marketing material. The information is required by law to help you understand the nature and the risks of investing in this fund. You are advised to read it so you can make an informed decision about whether to invest.

### TRIGON - New Europe Fund B EUR

ISIN: LU1687402633

A Subfund of the Fund TRIGON

The Fund is managed by IPConcept (Luxemburg) S.A..

#### Objectives and investment policy

The objective of the investment policy for TRIGON - New Europe Fund is to achieve reasonable growth in the sub-fund currency while taking account of the investment risk.

In order to achieve the investment objective of the sub-fund TRIGON - New Europe Fund a minimum of 90 % of the net sub-fund assets will be invested in shares traded on the regulated markets of the countries that joined the European Union in 2004 and later and of the countries that are expected to join the European Union.

A maximum of 10 % of the net sub-fund assets may be invested in liquid funds.

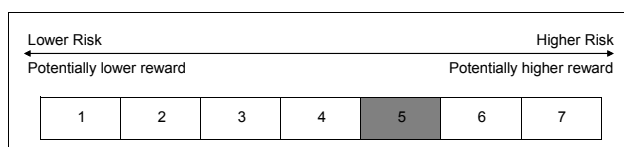
The Fund may not invest more than 10 % of its net asset value in money market instruments, certificates, structured products and bonds.

Detailed information on the aforementioned (and/or further) investment opportunities of the Fund can be found in the current sales prospectus.

In principle, investors may redeem their shares on any banking day in Luxembourg, with the exception of 24 and 31 December. The redemption of shares may be suspended in extraordinary circumstances if this is deemed necessary in the interests of investors.

The Fund reinvests but does not pay rewards to investors.

#### Risk and reward profile



The historical data used for calculating the synthetic indicator are not a reliable indication of the future risk and reward profile of the share class. The category shown is not guaranteed to remain unchanged and may shift over time. Even the lowest category does not mean a risk-free investment.

This share class has been placed in the aforementioned risk class because its unit price is subject to medium to significant fluctuation, therefore the profit potential and loss exposure may be moderate to high.

Because of the calculation model used, all risks may not be taken into consideration when placing the share class in a risk class. Detailed information can be found in the section entitled "Risks" of the prospectus. The following risks have no direct influence on this categorisation, but may be significant for the Fund:

#### Credit risks:

The Fund may invest part of its assets in bonds. The issuers of these bonds could become insolvent, causing the bonds to lose some or all of their value.

#### Liquidity risks:

The Fund may invest part of its assets in securities that are not traded on a stock exchange or similar market. It may be difficult to find a buyer for such securities in the short term. As a result, the risk that share redemptions will be suspended may increase.

#### Counterparty risks:

The Fund may enter into various transactions with counterparties. If a counterparty becomes insolvent, that party will not be able to meet some or all of its open obligations to the Fund.

#### Risks relating to the use of

The Fund may enter into derivative transactions for the purposes listed above in the section "Investment policy". This means increased opportunities, but also increased risk of losses. The use of derivatives to hedge against losses may also reduce the profit opportunities of the Fund.

#### Operating risks and custodial risks:

The Fund may fall victim to fraud or other criminal activities. It may suffer losses through misunderstandings or errors on the part of employees of the investment company or third parties or be hurt by external events, such as natural disasters. There is a risk of loss associated with holding assets in custody, especially abroad. This risk may result from insolvency, negligence or misconduct on the part of the Custodian or a sub-custodian.

## Charges

### One-off charges taken before or after you invest

<b>Entry charge</b>	<b>0,00%</b>
<b>Exit charge</b>	<b>0,00%</b>

This is the maximum that might be taken out of your money before it is invested or before payment of the redemption price. Please consult your financial advisor for the actual amounts.

### Charges taken from the Fund in the past financial year

<b>Ongoing charges</b>	<b>1,26%</b>
------------------------	--------------

The amount is based on the charges incurred by the share class over the past 12 months and may vary from year to year.

### Charges taken from the Fund under certain specific conditions

#### **Performance fees:**

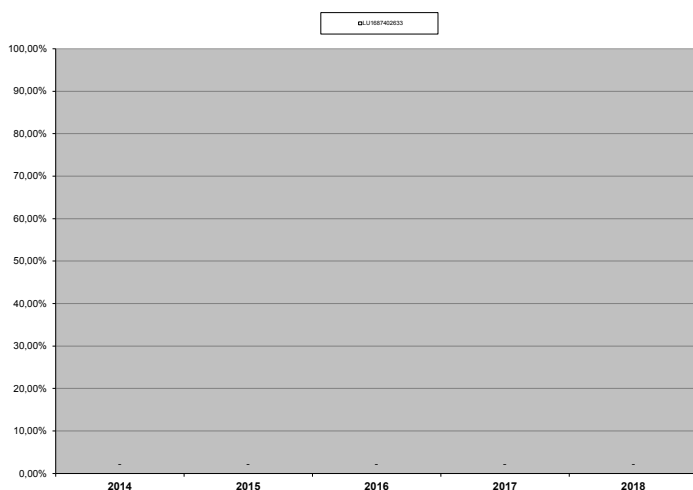
Up to 15% of the amount by which the performance of the unit value exceeds that of the benchmark index (MSCI EFM CEEC ex Russia Net Return (NU136621)) at the end of an accounting period (outperformance over the benchmark index). This is paid out yearly.

In the past financial year, the performance fee amounted to 0,00%.

The charges borne by the investor are used for the operation of the Fund and for its management, marketing and distribution. The charges reduce the potential investment growth of the Fund.

Any eventual performance-related fee as well as any transaction costs incurred, with the exception of the transaction costs of the Custodian Bank, are not included in the 'ongoing charges' figure.

## Past performance



The share class was established in 2018.

Because this share class has been newly launched, no useful information about previous performance can be made available here.

## Practical information

The Fund's Depositary is DZ PRIVATBANK S.A., whose registered office is at 4, rue Thomas Edison, Strassen, Luxembourg.

Additional information on the Subfund, the current prospectus with annex and management regulation, and the most recent annual and semi-annual reports (all in English) may be obtained at no charge during normal business hours from the Investment Company, Management Company, the Depositary, the Distributor(s) and the Paying Agent(s).

Further practical information as well as the up-to-date unit prices may be downloaded from the Management Company's website at any time and requested free of charge from the aforementioned agents. Moreover, details of the up-to-date remuneration policy, containing a description of how remuneration and other benefits are calculated, as well as the identities of persons responsible for allocating the remuneration and other benefits, including the composition of the remuneration committee (should one exist), may be downloaded from the Management Company a hard copy may also be requested free of charge from the aforementioned agents. The Management Company's website is [www.ipconcept.com](http://www.ipconcept.com).

The tax laws in the Member State in which the Subfund originated may influence your personal tax situation. Please consult your tax advisor with regard to the tax consequences of investing in the Subfund.

The Management Company may be held liable solely on the basis of any statement contained in this document that is misleading, inaccurate or inconsistent with the relevant parts of the prospectus.

This key information describes a share class of the Subfund. The Subfund forms part of an umbrella fund. The prospectus and the reports may contain information on all share classes of the entire Fund mentioned at the beginning of this document. The assets and liabilities of all Subfunds are segregated by law.

In principle, units of the sub-funds and/or of the unit class may be exchanged for those of another sub-fund and/or unit class. Please refer to the Sales Prospectus for details on any exchange options and associated costs.

This Fund is authorised in Luxembourg and regulated by the Commission de Surveillance du Secteur Financier.

This key investor information is accurate as at 30.04.2019.

This document provides you with key investor information about this fund. It is not marketing material. The information is required by law to help you understand the nature and the risks of investing in this fund. You are advised to read it so you can make an informed decision about whether to invest.

## TRIGON - New Europe Fund D EUR

ISIN: LU1687403102

A Subfund of the Fund TRIGON

The Fund is managed by IPConcept (Luxemburg) S.A..

### Objectives and investment policy

The objective of the investment policy for TRIGON - New Europe Fund is to achieve reasonable growth in the sub-fund currency while taking account of the investment risk.

In order to achieve the investment objective of the sub-fund TRIGON - New Europe Fund a minimum of 90 % of the net sub-fund assets will be invested in shares traded on the regulated markets of the countries that joined the European Union in 2004 and later and of the countries that are expected to join the European Union.

A maximum of 10 % of the net sub-fund assets may be invested in liquid funds.

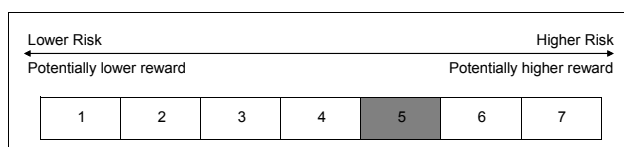
The Fund may not invest more than 10 % of its net asset value in money market instruments, certificates, structured products and bonds.

Detailed information on the aforementioned (and/or further) investment opportunities of the Fund can be found in the current sales prospectus.

In principle, investors may redeem their shares on any banking day in Luxembourg, with the exception of 24 and 31 December. The redemption of shares may be suspended in extraordinary circumstances if this is deemed necessary in the interests of investors.

The Fund reinvests but does not pay rewards to investors.

### Risk and reward profile



The historical data used for calculating the synthetic indicator are not a reliable indication of the future risk and reward profile of the share class. The category shown is not guaranteed to remain unchanged and may shift over time. Even the lowest category does not mean a risk-free investment.

This share class has been placed in the aforementioned risk class because its unit price is subject to medium to significant fluctuation, therefore the profit potential and loss exposure may be moderate to high.

Because of the calculation model used, all risks may not be taken into consideration when placing the share class in a risk class. Detailed information can be found in the section entitled "Risks" of the prospectus. The following risks have no direct influence on this categorisation, but may be significant for the Fund:

#### Credit risks:

The Fund may invest part of its assets in bonds. The issuers of these bonds could become insolvent, causing the bonds to lose some or all of their value.

#### Liquidity risks:

The Fund may invest part of its assets in securities that are not traded on a stock exchange or similar market. It may be difficult to find a buyer for such securities in the short term. As a result, the risk that share redemptions will be suspended may increase.

#### Counterparty risks:

The Fund may enter into various transactions with counterparties. If a counterparty becomes insolvent, that party will not be able to meet some or all of its open obligations to the Fund.

#### Risks relating to the use of

The Fund may enter into derivative transactions for the purposes listed above in the section "Investment policy". This means increased opportunities, but also increased risk of losses. The use of derivatives to hedge against losses may also reduce the profit opportunities of the Fund.

#### Operating risks and custodial risks:

The Fund may fall victim to fraud or other criminal activities. It may suffer losses through misunderstandings or errors on the part of employees of the investment company or third parties or be hurt by external events, such as natural disasters. There is a risk of loss associated with holding assets in custody, especially abroad. This risk may result from insolvency, negligence or misconduct on the part of the Custodian or a sub-custodian.

## Charges

### One-off charges taken before or after you invest

**Entry charge** 0,00%  
**Exit charge** 0,00%

This is the maximum that might be taken out of your money before it is invested or before payment of the redemption price. Please consult your financial advisor for the actual amounts.

### Charges taken from the Fund in the past financial year

**Ongoing charges** 2,09%

This amount is based on the charges incurred by the share class in the past financial year, and may vary from year to year. The past financial year ended on 31.12.2018.

### Charges taken from the Fund under certain specific conditions

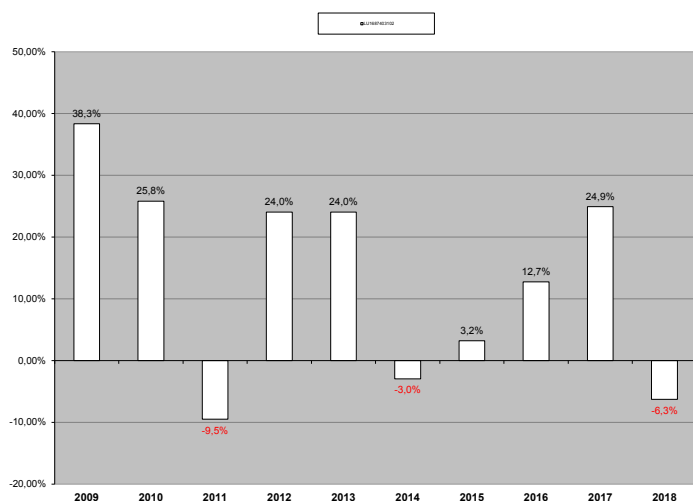
#### **Performance fees:**

No performance fee is foreseen for this shareclass.

The charges borne by the investor are used for the operation of the Fund and for its management, marketing and distribution. The charges reduce the potential investment growth of the Fund.

Any eventual performance-related fee as well as any transaction costs incurred, with the exception of the transaction costs of the Custodian Bank, are not included in the 'ongoing charges' figure.

## Past performance



The share class was established in 2018. The performance relates to the shareclass Trigon New Europe Fund Class A which migrated into this shareclass as per 9 April 2018 and which was launched 10 April 2002

Fund performance includes all the charges taken from the Fund except entry and exit charges. The historic performance does not guarantee similar performance for the future time period.

The performance has been calculated in EUR

## Practical information

The Fund's Depository is DZ PRIVATBANK S.A., whose registered office is at 4, rue Thomas Edison, Strassen, Luxembourg.

Additional information on the Subfund, the current prospectus with annex and management regulation, and the most recent annual and semi-annual reports (all in English) may be obtained at no charge during normal business hours from the Investment Company, Management Company, the Depository, the Distributor(s) and the Paying Agent(s).

Further practical information as well as the up-to-date unit prices may be downloaded from the Management Company's website at any time and requested free of charge from the aforementioned agents. Moreover, details of the up-to-date remuneration policy, containing a description of how remuneration and other benefits are calculated, as well as the identities of persons responsible for allocating the remuneration and other benefits, including the composition of the remuneration committee (should one exist), may be downloaded from the Management Company a hard copy may also be requested free of charge from the aforementioned agents. The Management Company's website is [www.ipconcept.com](http://www.ipconcept.com).

The tax laws in the Member State in which the Subfund originated may influence your personal tax situation. Please consult your tax advisor with regard to the tax consequences of investing in the Subfund.

The Management Company may be held liable solely on the basis of any statement contained in this document that is misleading, inaccurate or inconsistent with the relevant parts of the prospectus.

This key information describes a share class of the Subfund. The Subfund forms part of an umbrella fund. The prospectus and the reports may contain information on all share classes of the entire Fund mentioned at the beginning of this document. The assets and liabilities of all Subfunds are segregated by law.

In principle, units of the sub-funds and/or of the unit class may be exchanged for those of another sub-fund and/or unit class. Please refer to the Sales Prospectus for details on any exchange options and associated costs.

This Fund is authorised in Luxembourg and regulated by the Commission de Surveillance du Secteur Financier.

This key investor information is accurate as at 24.04.2019.



## KEY INVESTOR INFORMATION



This document provides you with key investor information about this fund. It is not marketing material. The information is required by law to help you understand the nature and the risks of investing in this fund. You are advised to read it so you can make an informed decision about whether to invest.

### TRIGON - New Europe Fund E EUR

ISIN: LU1687403367

A Subfund of the Fund TRIGON

The Fund is managed by IPConcept (Luxemburg) S.A..

#### Objectives and investment policy

The objective of the investment policy for TRIGON - New Europe Fund is to achieve reasonable growth in the sub-fund currency while taking account of the investment risk.

In order to achieve the investment objective of the sub-fund TRIGON - New Europe Fund a minimum of 90 % of the net sub-fund assets will be invested in shares traded on the regulated markets of the countries that joined the European Union in 2004 and later and of the countries that are expected to join the European Union.

A maximum of 10 % of the net sub-fund assets may be invested in liquid funds.

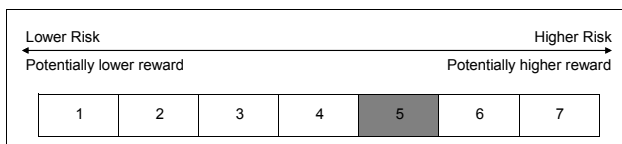
The Fund may not invest more than 10 % of its net asset value in money market instruments, certificates, structured products and bonds.

Detailed information on the aforementioned (and/or further) investment opportunities of the Fund can be found in the current sales prospectus.

In principle, investors may redeem their shares on any banking day in Luxembourg, with the exception of 24 and 31 December. The redemption of shares may be suspended in extraordinary circumstances if this is deemed necessary in the interests of investors.

The Fund reinvests but does not pay rewards to investors.

#### Risk and reward profile



The historical data used for calculating the synthetic indicator are not a reliable indication of the future risk and reward profile of the share class. The category shown is not guaranteed to remain unchanged and may shift over time. Even the lowest category does not mean a risk-free investment.

This share class has been placed in the aforementioned risk class because its unit price is subject to medium to significant fluctuation, therefore the profit potential and loss exposure may be moderate to high.

Because of the calculation model used, all risks may not be taken into consideration when placing the share class in a risk class. Detailed information can be found in the section entitled "Risks" of the prospectus. The following risks have no direct influence on this categorisation, but may be significant for the Fund:

#### Credit risks:

The Fund may invest part of its assets in bonds. The issuers of these bonds could become insolvent, causing the bonds to lose some or all of their value.

#### Liquidity risks:

The Fund may invest part of its assets in securities that are not traded on a stock exchange or similar market. It may be difficult to find a buyer for such securities in the short term. As a result, the risk that share redemptions will be suspended may increase.

#### Counterparty risks:

The Fund may enter into various transactions with counterparties. If a counterparty becomes insolvent, that party will not be able to meet some or all of its open obligations to the Fund.

#### Risks relating to the use of

The Fund may enter into derivative transactions for the purposes listed above in the section "Investment policy". This means increased opportunities, but also increased risk of losses. The use of derivatives to hedge against losses may also reduce the profit opportunities of the Fund.

#### Operating risks and custodial risks:

The Fund may fall victim to fraud or other criminal activities. It may suffer losses through misunderstandings or errors on the part of employees of the investment company or third parties or be hurt by external events, such as natural disasters. There is a risk of loss associated with holding assets in custody, especially abroad. This risk may result from insolvency, negligence or misconduct on the part of the Custodian or a sub-custodian.

## Charges

### One-off charges taken before or after you invest

<b>Entry charge</b>	<b>0,00%</b>
<b>Exit charge</b>	<b>0,00%</b>

This is the maximum that might be taken out of your money before it is invested or before payment of the redemption price. Please consult your financial advisor for the actual amounts.

### Charges taken from the Fund in the past financial year

<b>Ongoing charges</b>	<b>2,35%</b>
------------------------	--------------

This amount is based on the charges incurred by the share class in the past financial year, and may vary from year to year. The past financial year ended on 31.12.2018.

### Charges taken from the Fund under certain specific conditions

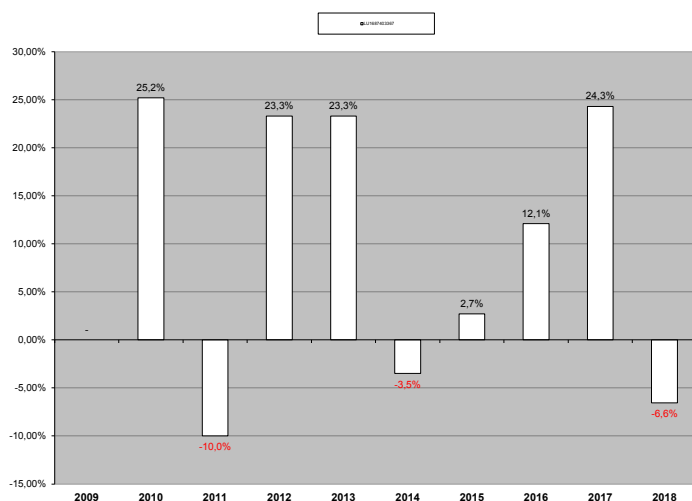
#### **Performance fees:**

No performance fee is foreseen for this shareclass.

The charges borne by the investor are used for the operation of the Fund and for its management, marketing and distribution. The charges reduce the potential investment growth of the Fund.

Any eventual performance-related fee as well as any transaction costs incurred, with the exception of the transaction costs of the Custodian Bank, are not included in the 'ongoing charges' figure.

## Past performance



The share class was established in 2018. The performance relates to the shareclass Trigon New Europe Fund Class C which migrated into this shareclass as per 09 April 2018 and which was launched 8 April 2009

Fund performance includes all the charges taken from the Fund except entry and exit charges. The historic performance does not guarantee similar performance for the future time period.

The performance has been calculated in EUR

## Practical information

The Fund's Depository is DZ PRIVATBANK S.A., whose registered office is at 4, rue Thomas Edison, Strassen, Luxembourg.

Additional information on the Subfund, the current prospectus with annex and management regulation, and the most recent annual and semi-annual reports (all in English) may be obtained at no charge during normal business hours from the Investment Company, Management Company, the Depository, the Distributor(s) and the Paying Agent(s).

Further practical information as well as the up-to-date unit prices may be downloaded from the Management Company's website at any time and requested free of charge from the aforementioned agents. Moreover, details of the up-to-date remuneration policy, containing a description of how remuneration and other benefits are calculated, as well as the identities of persons responsible for allocating the remuneration and other benefits, including the composition of the remuneration committee (should one exist), may be downloaded from the Management Company a hard copy may also be requested free of charge from the aforementioned agents. The Management Company's website is [www.ipconcept.com](http://www.ipconcept.com).

The tax laws in the Member State in which the Subfund originated may influence your personal tax situation. Please consult your tax advisor with regard to the tax consequences of investing in the Subfund.

The Management Company may be held liable solely on the basis of any statement contained in this document that is misleading, inaccurate or inconsistent with the relevant parts of the prospectus.

This key information describes a share class of the Subfund. The Subfund forms part of an umbrella fund. The prospectus and the reports may contain information on all share classes of the entire Fund mentioned at the beginning of this document. The assets and liabilities of all Subfunds are segregated by law.

In principle, units of the sub-funds and/or of the unit class may be exchanged for those of another sub-fund and/or unit class. Please refer to the Sales Prospectus for details on any exchange options and associated costs.

This Fund is authorised in Luxembourg and regulated by the Commission de Surveillance du Secteur Financier.

This key investor information is accurate as at 24.04.2019.